



So, the Plaques speak for themselves  
They were mounted on the main building



**Lake Eleanor**  
[https://en.wikipedia.org/wiki/Banning\\_Dam](https://en.wikipedia.org/wiki/Banning_Dam)  
<https://www.alltrails.com/trail/us/california/lake-eleanor-open-space>

I just loved this Pic & History  
I have included a couple of sites that have stories & Pics

Well, Yee Haw...

Howdy folks

These are additional pics of the Ford Valley V8's tour of the Stagecoach Inn Museum

I was busy shooting, so I did miss much of the tour guides, Sorry about that, &&&, If I mess up some of the captions, Please feel free to reach out to Me with corrections. madmodelr@aol.com

For more information on the Museum, go to...  
<https://stagecoachinnmuseum.com>



**Blacksmith's shop & Tools**

Now thats Heavy Metal

Pictured at the bottomis Mr. Bob, & Mr. Wayne, The Blacksmiths



# Stagecoach & Tack room

## Coach & Coach Accessories

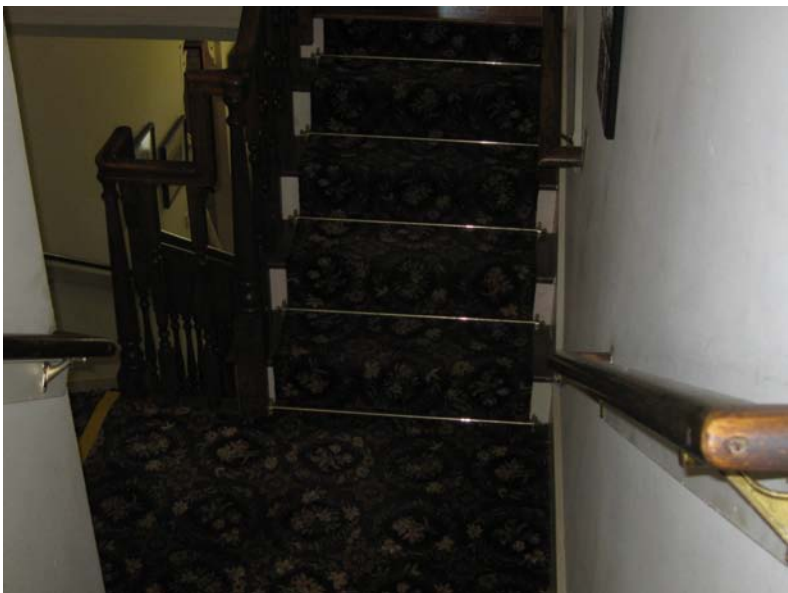
Stagecoach Route map

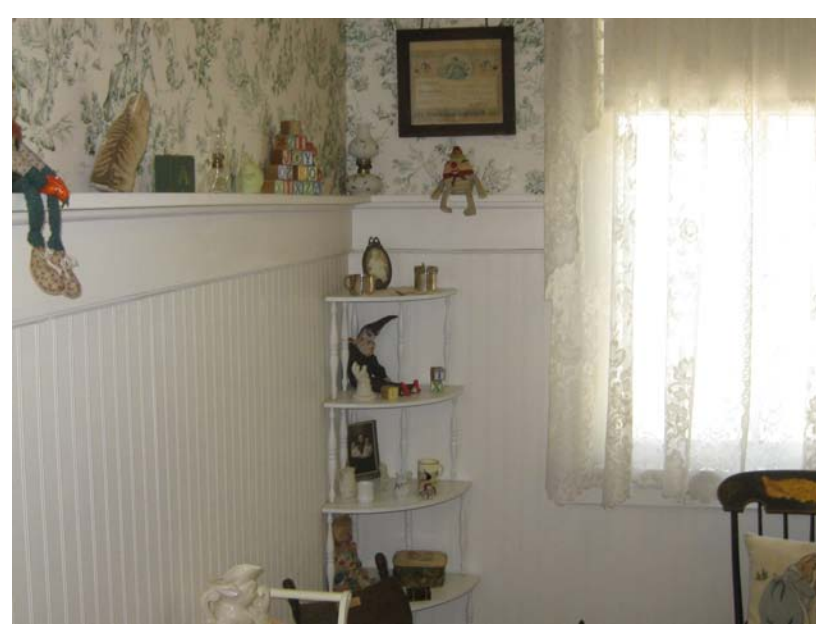




This is the "Victrola" room  
This room goes back to Wax Cylinders, & not just a couple, the glass front case was full of those musical litl gems









The "Jungleland" Room

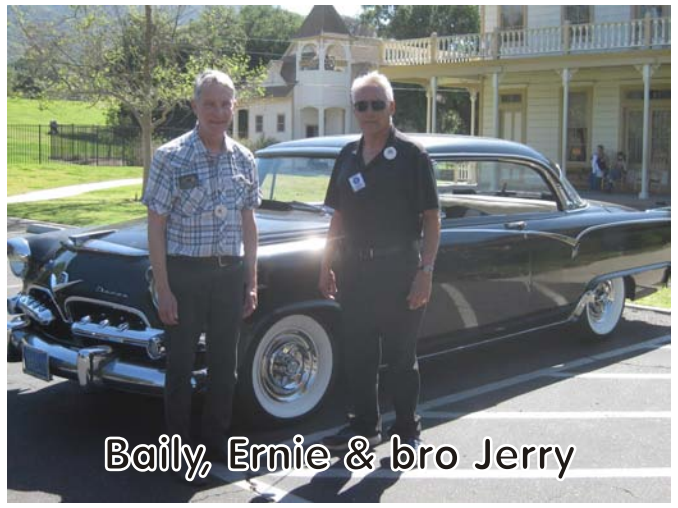
This room was dedicated to the wildlife park, "Jungleland" that was located at the far end of Thousand Oaks where the Civic Arts center is.







The Club



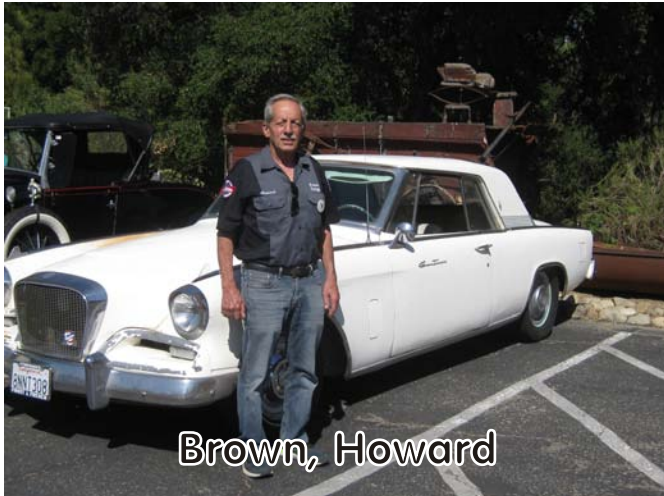
Baily, Ernie & bro Jerry



Boscovich, Steve & Sue



Sapper, Ken & Joanie



Brown, Howard



Batesole, Ron



Batesole, Steve

